

JEEVES WET RATED KIT

INSTALLATION GUIDE



2022.8

INCLUDED COMPONENTS



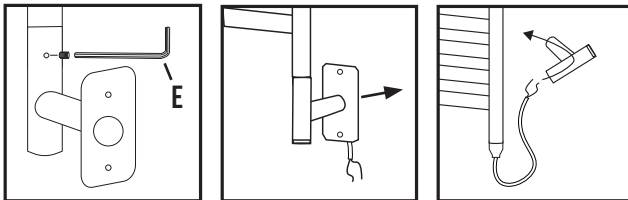
WARRANTY

A ten-year limited warranty on the unit and two years on the element will apply with proof of purchase if all Terms and Conditions of Sale are met, and Installation Instructions are adhered to.

NOTE: WATERPROOF WIRE CONNECTORS ARE RECOMMENDED BUT NOT INCLUDED

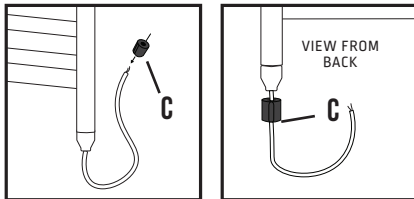
This is a guide to using the components supplied with the Jeeves Wet rated kit in order to install the heated towel rack in a wet room location.

NOTE: This is an addendum to the standard Jeeves Installation Instructions provided with the heated towel rack.



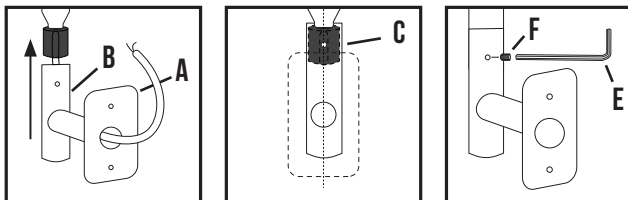
STEP 1

Untighten and remove the set screw from the element cover of your Jeeves Heated Towel Rack using the Allen Key Provided. Remove the L-Tube by unthreading the cord through until it is free.



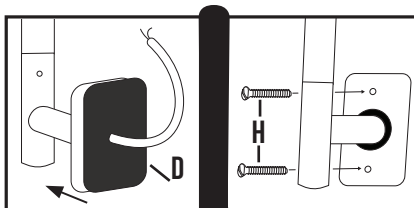
STEP 2

Thread the cord through the black sleeve [part C] from the wet rated kit, until the sleeve is firmly against the hexagonal nut at the base of the heated towel rack. Rotate the sleeve until the groove is at the back of the heated towel rack i.e. the side that will be facing the wall once the unit has been installed.



STEP 3

Thread the cord through the new L-Tube [Part B] included with the Wet Rated Kit and slide the element cover over the black sleeve [part C]. Align the element cover so that the set screw hole is in line with the groove on the black sleeve. Fit and tighten the set screw. Thread the Cover Plate with Grommet [Part A] onto the L-Tube with the rubber grommet facing away from the wall.



STEP 4

Thread the cord through the center of the Black Cover Gasket [Part D] so it is flush with the back of the Cover Plate with Grommet [part A]. Continue the standard Jeeves Heated Towel Rack installation and finish by securing the Cover Plate with the two Cover Plate Screws [part H].

CONTINUE WITH THE STANDARD JEEVES INSTALLATION BUT NOTE:

Use caulking around cover if not mounted to a U.L. -Listed wet rated box location.

Seal all openings to comply with wet location installation requirements.

Install with a GFCI circuit breaker and in accordance with local electrical codes.

ENGINEERING CONSIDERATIONS: (Not for Field Representative's use.)

The products covered by this report are towel warmers intended for general use and are intended for permanent installation fastened to the wall. All units are provided with a cord and plug. These warmers are composed of stainless steel tubing and fittings welded together, containing a water/anti-freeze mix liquid in a closed system. Provided with a Recognized Component heating element employing a temperature-regulating/limiting thermostat and thermal cut-off device. The thermostat has been tested as part of this investigation for 100,000 cycles.

The towel warmers differ by their shapes and size.

The towel warmers are also made as a "Wet Version" type, which are designed to seal out shower water from electrical components and connections, and thereby allows them to be installed in NEC (NFPA 70) Zone 1 locations. These models also employ a hard wiring method for connection to the supply source

USL indicates the units were evaluated to the Standard for Miscellaneous Heater, UL 499.

CNL indicates the units were evaluated to the Canadian Standard C22.2 No. 64, Household Cooking and Heating Appliances.

CONSTRUCTION DETAILS:

General - For general details of construction, refer to Sec. Gen. Towel racks may be provided with a means for permanent connection to a supply source or a permanently-attached power supply cord.

SHARPNESS OF EDGES:

All edges and corners of the frame, enclosure, guards, etc. exposed during normal use, installation or maintenance or which may be contacted by internal wiring are smooth, well-rounded and free of burrs. Particular attention needs to be paid attention to the L-bracket in which the cord passes through on the permanently connected types.

Markings - Refer to Section General.

Cautionary Marking - In addition to the requirements in Sec. Gen., the following are also required:

"CAUTION: Hot Surface. Avoid Contact." Located on or adjacent to the surface of vertical bar near entrance of power supply cord where visible to operator.

*

"Wet Version" Models:

Must be marked: "For Use in Wet Locations".

All cautionary markings on the appliance shall be repeated in its entirety or with an equivalent wording in the instruction manual.

Instructions - The installation and operating instruction manual shall contain the following statements or equivalent to warn the installer against the risk of fire or electric shock hazards. See Illustration 1 for details on installation instructions for devices intended for permanent connection. **Refer to Ill. 1A for addendum to Installation Instructions applying to "Wet Version" models.**

1. "WARNING - This unit is not intended for installation in a shower, sauna, steam room or near a water spray."

Note: Item 1 does not apply to "Wet Version" models.

"CAUTION - Towel rail must be mounted with the element at the bottom with the towel rail in the upright position."

