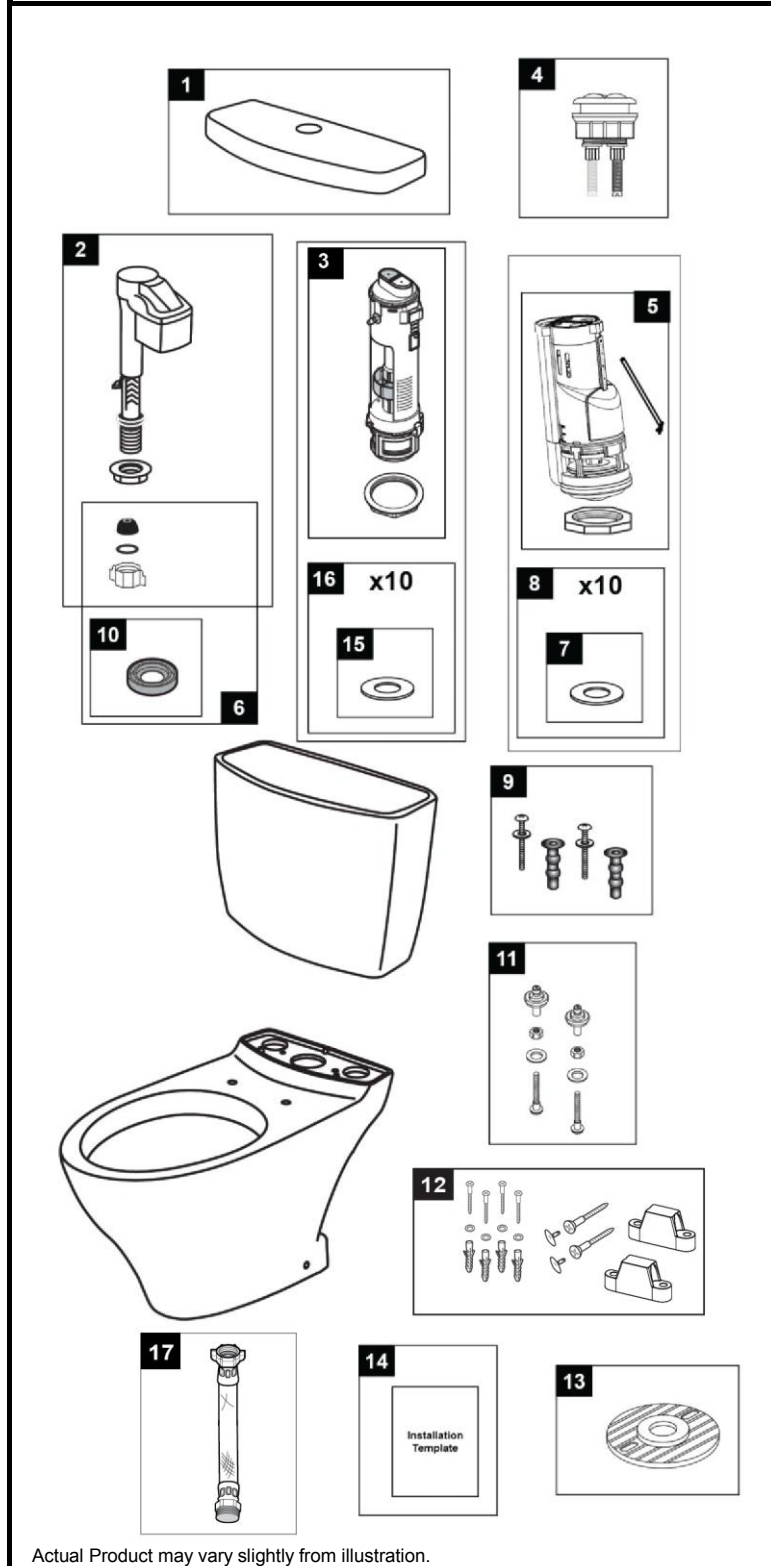


Aquia® II
1.6 & 0.9 Gpf Toilet, Elongated,
Dual Max®, 12" Rough-In

CST416M
CT416
ST416M



| Item | Part | Description |
|------|-------------|--|
| 1 | TCU416CR#01 | Tank Lid w/ Velcro Tape - Cotton |
| | TCU416CR#03 | Tank Lid w/ Velcro Tape - Bone |
| | TCU416CR#11 | Tank Lid w/ Velcro Tape - Colonial White |
| | TCU416CR#12 | Tank Lid w/ Velcro Tape - Sedona Beige |
| | TCU416CR#51 | Tank Lid w/ Velcro Tape - Ebony |
| 2 | TSU99A.X | Fill Valve |
| 3 | THU224 | Flush Valve |
| 4 | THU314#01 | Push Button Assembly - Cotton |
| | THU314#CP | Push Button Assembly - Chrome Plated |
| | THU314#BN | Push Button Assembly - Brushed Nickel |
| | THU314#PN | Push Button Assembly - Polished Nickel |
| 5 | THU435 | Flush Valve |
| 6 | THU238 | Parts Bag Assembly |
| 7 | 9BU088E | Flush Valve Gasket (1 piece) |
| 8 | THU348 | Flush Valve Gasket (10 pieces) |
| 9 | THU651N | Top Mounting Seat Hardware |
| 10 | 9BU062E | Tank to Bowl Gasket |
| 11 | TS810DV3 | Tank Top Mounting Kit |
| 12 | THU427#01 | Toilet Mounting Hardware - Cotton & Colonial White |
| | THU427#03 | Toilet Mounting Hardware - Bone |
| | THU427#12 | Toilet Mounting Hardware - Sedona Beige |
| | THU427#51 | Toilet Mounting Hardware - Ebony |
| 13 | THU291 | Socket Rough In |
| 14 | 0GU147-1 | Installation Template |
| 15 | 9BU102E | Flush Valve Gasket (1 piece) |
| 16 | THU227 | Flush Valve Gasket (10 pieces) |
| 17 | THU9090R | Washlet Adapter Hose Kit (required for Washlet installation) |

Note:

Items 7 and 8 are used with THU435 Flush Valve as shown.
Items 15 and 16 are used with THU224 Flush Valve as shown.

Product Number Explanations

| <u>Two-Piece Toilet</u> | <u>Tank</u> | <u>Bowl</u> |
|---------------------------|---------------|-------------|
| (CST) Gravity Type Toilet | (ST) Tank | (CT) Bowl |
| (416) Model | (416) Model | (416) Model |
| (M) Dual Max® | (M) Dual Max® | |