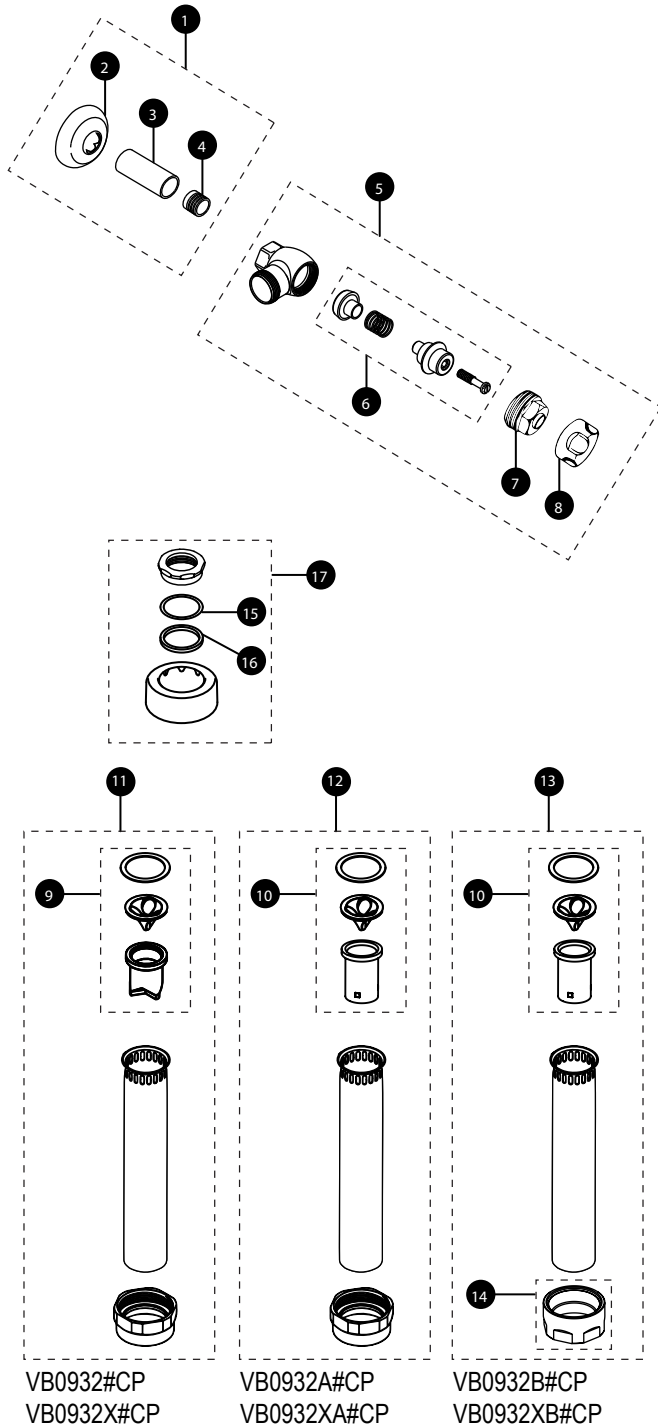


# VB0932(X)(A)(B)#CP

## Vacuum Breaker & Angle Stop Set for Toilet w/ Exposed, Top Spud 1-1/2" Outlet

VB0932#CP      VB0932X#CP  
 VB0932A#CP    VB0932XA#CP  
 VB0932B#CP    VB0932XB#CP



Item	Part	Description
1	TH559EDVSJ3	Sweat Solder Kit 1"
	THP3320	Sweat Solder Kit 1" RW*
2	71051NT9	Wall Flange 1"
3	SC3	Sleeve Cover 1"
4	SJ3	Solder Adapter 1"
	THP3317	Solder Adapter 1" RW*
5	10077T3	Angle Stop (1") Toilet- Chrome Plated
	THP3312#CP	Angle Stop (1") Toilet- Chrome Plated RW*
6	10077T3-PM	Angle Stop Repair Kit (1")
	THP3512	Angle Stop Repair Kit (1") RW*
7	10077T3-QM	Bonnet (1")
	THP3513	Bonnet (1") RW*
8	10077T3-XQ	Angle Stop Cap (1")
9	THP3292	Vacuum Breaker Repair Kit
10	THP3545	Vacuum Breaker Repair Kit (Skirted)
11	THP3284#CP	Tube Assembly (1-1/2" x 8-1/2") for VB0932#CP
	THP3324#CP	Tube Assembly (1-1/2" x 8-1/2") RW* for VB0932X#CP
12	THP3284A#CP	Tube Assembly (1-1/2" x 8-1/2") for VB0932A#CP
	THP3324A#CP	Tube Assembly (1-1/2" x 8-1/2") RW* for VB0932XA#CP
13	THP3284B#CP	Tube Assembly (1-1/2" x 8-1/2") for VB0932B#CP
	THP3324B#CP	Tube Assembly (1-1/2" x 8-1/2") RW* for VB0932XB#CP
14	THP3563	Hex Nut
15	R72115MZ	Friction Ring 1-1/2" (10/bag)
16	R81375MZ	Gaskets 1-1/2" (10/bag)
17	71051NT6	Spud Nut & Escutcheon 1-1/2"

\* RW = for Reclaimed Water. Includes VB0932X#CP, VB0932XA#CP, and VB0932XB#CP

Note: For Reclaimed Water (RW) applications use the RW version parts where applicable. Do not use standard vacuum breaker, standard control stop, or components with reclaimed water flush valve.