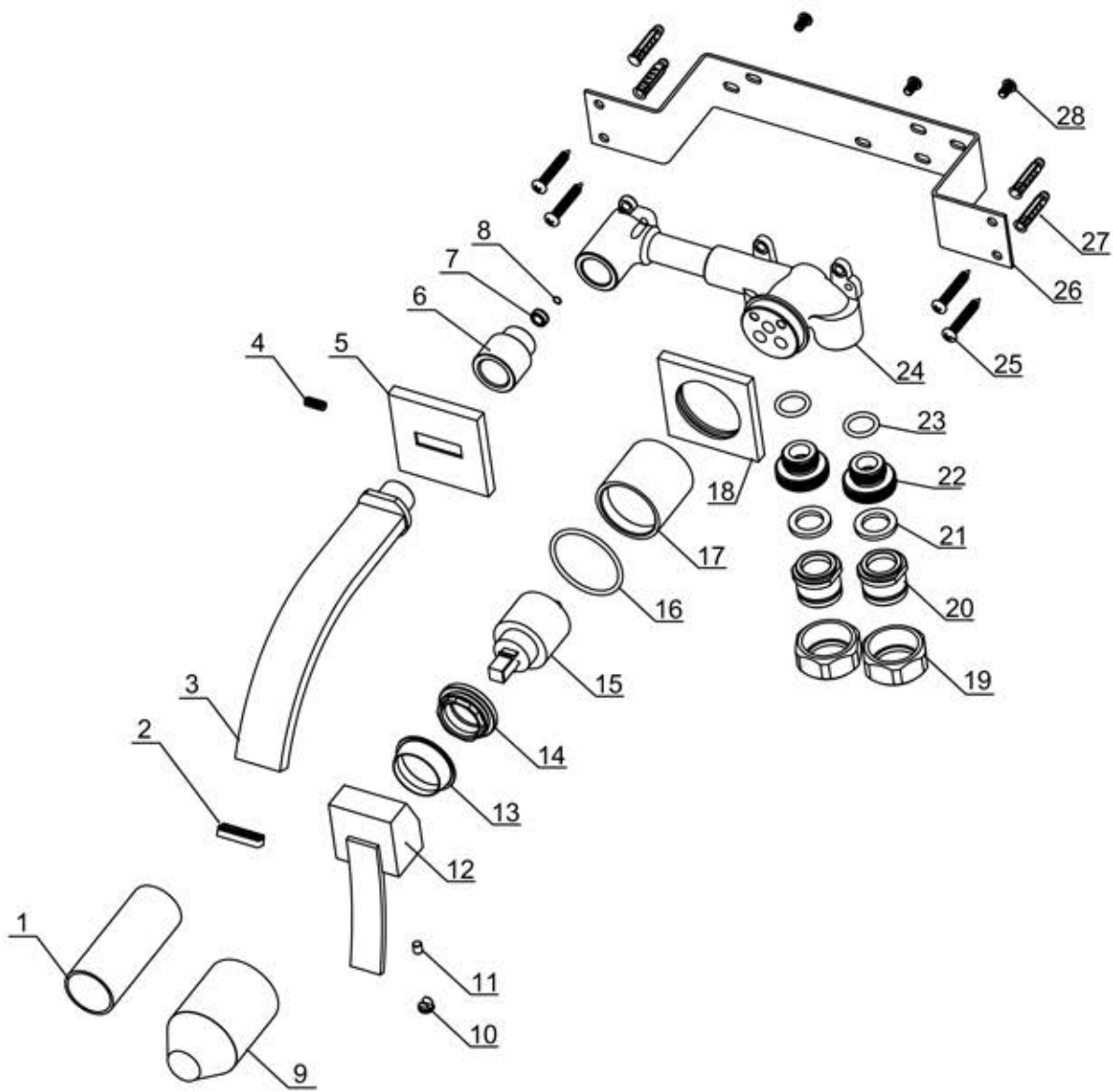


AB1256



28	M5*8 cross bolt	Stainless steel	3	50060009500
27	Explosive screw	Nylon	4	50020069529
26	1368 base	Q235	1	50020043401
25	Bolt 4.0*30	Stainless steel	4	50060023000
24	1676 main body	H59	1	10010102552-1
23	18*2 O-ring (NSF)	NBR	2	70010016230
22	1518 inlet pipe nut	H59	2	40060027952-1
21	3/4 washer (NSF)	NBR	2	70020024430
20	1035 joint cover (1/2NPT)	H59	2	40060027752-1
19	1035 joint nut	H59	2	40060020952
18	1256 decorative plate	H59	1	50010055801
17	46772-2380 cartridge cover	H59	1	40060077201
16	42.5*2.65 O-ring	NBR	1	70010004630
15	35A cartridge	Subassembly	1	20060003200
14	1298 cartridge nut (M37*1.25)	H59	1	40060075252
13	2218 decorative cover	ABS	1	50010078001
12	2258 handle (chrome)	Subassembly	1	20010009401
11	M5*6 fixing screw	Stainless steel	1	50060000600
10	Indicator (HC)	ABS	1	50010008600
9	2268 protective cover	PE	1	70030023229
8	6*1.8 O-ring (NSF)	NBR	1	70010027030
7	Flow restrictor	Subassembly	1	50050021331
6	1256 nut	H59	1	40060114752
5	1418 spout decorative plate	H59	1	50010055301
4	M5*12 fixing screw	Stainless steel	1	50060016600
3	1256 spout (UPC)	Subassembly	1	30010013301-1
2	2258 insert	POM	1	50050010731
1	2046 protective cover	PE	1	70030020029
No.	Description	Material	Qty.	Part No.