

### FEATURES

- The choice of self-generating hydropowered ECOPOWER® system or AC system
- IoT-ready product (ECOPOWER models only) – requires communication card sold separately for IoT functionality
- Micro-sensor positioned underneath the spout head provides accurate hand detection and ensures smooth, consistent water distribution
- Vandal resistant nozzle
- Aerated flow
- Durable chrome plated spout body
- Kit includes spout body, controller box, and mounting hardware (supply lines not included)
- 0.35 gpm aerated flow
- Contributes to earning LEED® credits
- Equipped with 0.35 gpm flow control. 0.12 gpc, 20 sec on-demand flow
- IoT-enabled options available to remotely monitor usage rates, water consumption, fixture performance and streamline operations in real time with instant alerts

### OPTIONAL ACCESSORIES

- **THP3158#CP** - 4" Cover Plate
- **THP3159#CP** - 8" Cover Plate
- **THP3237** - Swivel Coupling

### COLORS/FINISHES

- #CP Polished Chrome

### PRODUCT SPECIFICATION

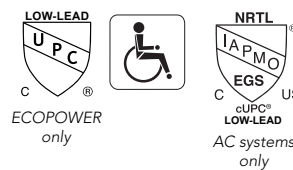
TOTO Model # \_\_\_\_\_ Choice of self-generating hydropowered ECOPOWER system or AC system. The faucet shall have maximum of 20 seconds on-demand flow (0.12 gpc). The faucet shall have self-adjusting sensor. Product equipped with 0.35 gpm flow regulator.



### CODES/STANDARDS

- Operates below federally mandated consumption limit of 0.25 gpc
- Complies to California Green Building Code, CALGreen max flow of 0.20 gpc
- Meets or exceeds ASME A112.18.1/CSA B125.1, and NSF 372
- Meets or exceeds UL 1951, CSA C22.2 No.14 and 68 (AC systems only)
- Certifications: IAPMO(cUPC), California Energy Commission (CEC), State of Massachusetts, and others
- Complies with City of Los Angeles Water Efficiency Ordinance
- ADA compliant
- Complies with Federal and State statutes as low-lead (contains a weighted average of 0.25% lead or less)
- Complies with CA Prop 65 warning requirements
- FCC compliant to Part 15 (for IoT only)

\*For codes and standards of mixing valves TLM10 and TLE05701U, please refer to corresponding product spec sheet



### ECOPOWER MODELS

Kit Options	Component Breakdown				
	Spout	ECOPOWER Controller	Mixing valve	Thermo Mixing Valve	IoT Card
<b>T22S32Ei#\$\$</b>	TLE22001U2#\$\$	TLE03501U2i			*
<b>T22S32EiM#\$\$</b>	TLE22001U2#\$\$	TLE03501U2i	TLM10		*
<b>T22S32EiT#\$\$</b>	TLE22001U2#\$\$	TLE03501U2i		TLE05701U	*
<b>T22S32Ei4#\$\$</b>	TLE22001U2#\$\$	TLE03501U2i			THP3566

\*Requires communication card (sold separately) for IoT functionality

### AC MODELS (Not IoT Compatible)

Kit Options	Component Breakdown			
	Spout	AC Controller	Mixing valve	Thermo Mixing Valve
<b>T22S32A#\$\$</b>	TLE22001U2#\$\$	TLE01501U		
<b>T22S32AM#\$\$</b>	TLE22001U2#\$\$	TLE01501U	TLM10	
<b>T22S32AT#\$\$</b>	TLE22001U2#\$\$	TLE01501U		TLE05701U

# T22S32i Series

## GM Touchless Faucet

### SPECIFICATIONS

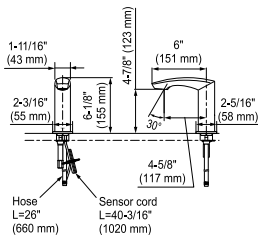
Type	ECOPOWER	AC
Power Supply	Hydropower Generation (self-powering power supply)	AC 120V
IoT Capability	IoT-Enabled	
Sensor Detection Range	5-1/8" ~ 7-7/8" (130 ~ 200 mm) Sensor is self-adjusting	
Water Supply Pressure	Min (Dynamic/Flowing) Pressure: 15 psi (100 kPa) Max (Static) Pressure: 80 psi (551 kPa)	
Water Supply	G 1/2" (1/2" NPSM compatible)	
Inlet Temperature Range	39-110°F (4-43°C)	
Ambient Temperature	32-104°F (0-40°C)	
Humidity	Max. 90% RH	
Flow Rate	0.12 gpc (0.44 Lpc)** - max 20 second On Demand*** (0.12 gpc = 0.35 gpm x 20/60 sec) Equipped with 0.35 gpm flow control	
Warranty	Three years	

\*\*Gallons per cycle (gpc) is the amount of water discharged per usage cycle.

\*\*\* On-demand refers to the way in which the water is dispensed (i.e.; water is only dispensed when the sensor is activated by the user as needed)

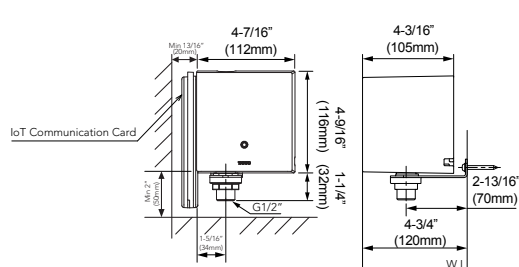
### DIMENSIONS

#### GM Touchless Faucet

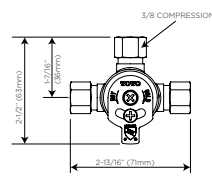


- Mounting deck thickness: 1/4" (5 mm) - 2" (50 mm)
- Spout hole: Ø1-1/4" (Ø32 mm) - Ø1-3/8" (Ø35 mm)

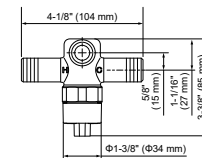
#### ECOPOWER Controller



#### Available Mixing Valves

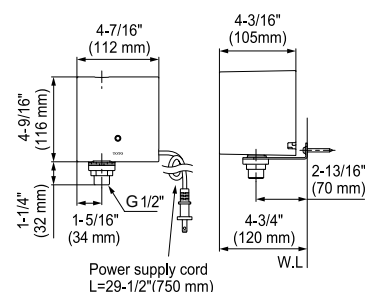


Hot/Cold Mixing Tee (TLM10)



Thermostatic Mixing Valve (TLE05701U)

#### AC Controller



These dimensions and specifications are subject to change without notice

**TOTO**