

FEATURES

- Sensor operated foaming soap dispenser
- Self-adjusting sensor spout with base unit, mounting hardware and supply lines
- Single-hole mount
- TOTO Soap required
- Refillable tank system
- IoT-enabled options available to remotely monitor usage rates, soap consumption, fixture performance and streamline operations in real time with instant alerts

OPTIONAL ACCESSORIES

- **THP3140#CP**
Escutcheon 1-1/8" ~ 1 -1/2" (28 mm ~ 38 mm)
- **THP3374**
Mounting bracket for tank

COLORS/FINISHES

- #CP Polished Chrome

PRODUCT SPECIFICATION

TOTO Model # _____ Product shall be automatic infra-red sensor activated. Product shall have automatic sensor adjustment upon installation. Soap dispenser, controller w/ reservoir, and subtank will be sold separately. Product shall have a controller pump with 0.8 gallon (3L) reservoir.



CODES/STANDARDS

- Meets and exceeds UL1951, CSA C22.2 #68
- Certifications: IAPMO(cUPC)
- Code Compliance: NEC, CEC
- ADA Compliant
- Compliance with CA Prop 65 warning requirements
- FCC compliant to Part 15



MODELS

Kit Options	Component Breakdown		
	Spout (xQTY)	Controller & Reservoir	IoT Card
TES201AJi#CP	TLK09001U#CP (x1)	TLK01101Ui	*
TES202AJi#CP	TLK09001U#CP (x2)	TLK01102Ui	*
TES203AJi#CP	TLK09001U#CP (x3)	TLK01103Ui	*
TES201AJi4#CP	TLK09001U#CP (x1)	TLK01101Ui	THP3566
TES202AJi4#CP	TLK09001U#CP (x2)	TLK01102Ui	THP3566
TES203AJi4#CP	TLK09001U#CP (x3)	TLK01103Ui	THP3566

*Requires communication card (sold separately) for IoT functionality

SPECIFICATIONS

Power Supply	AC 120V
IoT Capacity	IoT-Enabled
Wattage	(TLK01106Ui) 6.5W (TLK01107Ui) 9W
Sensor Detection Range	5-1/8" ~ 7-7/8" (130 ~ 200 mm) Sensor is self-adjusting
Ambient Temperature	34-104°F (1-40°C)
Humidity	Max. 90% RH
Power Cord Length	55" (1.4 m)
Soap Output Volume	0.04 oz (factory setting)
Tank Capacity	Approximately 0.8 gallon (3L)
Warranty	*Three Year Warranty

* Failure to use TOTO soap will void warranty

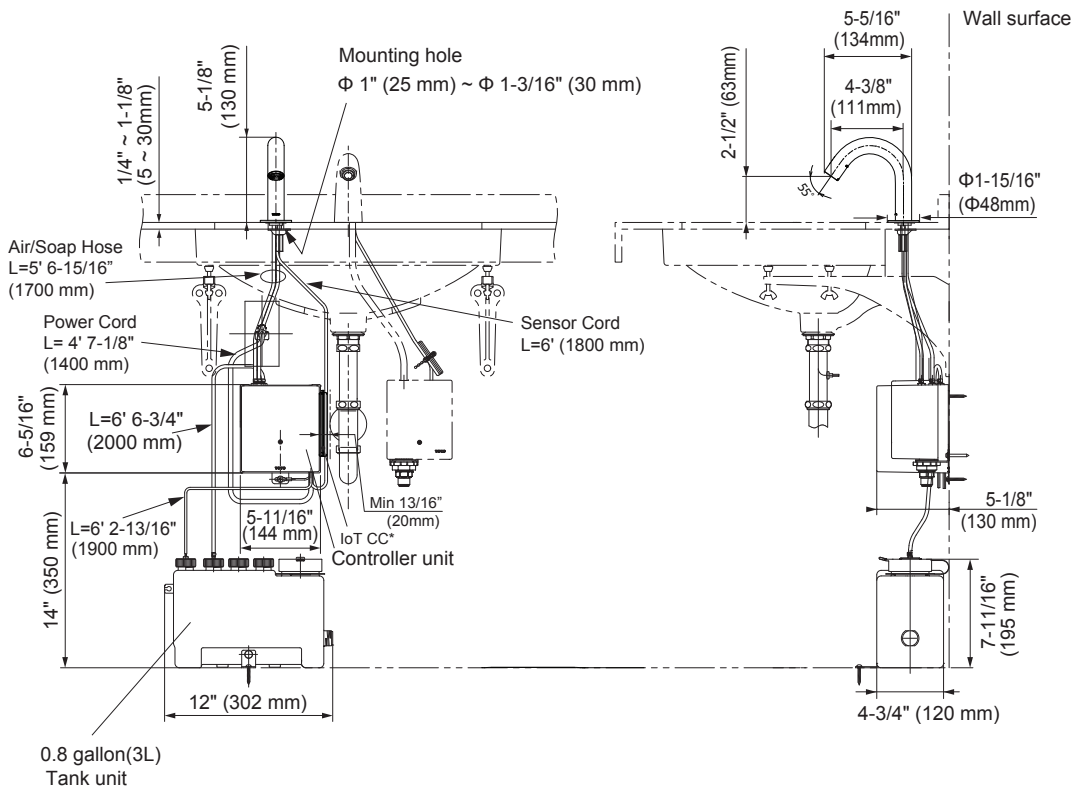
INSTALLATION NOTES

- Spout Mounting Hole $\varnothing 1"$ ~ $\varnothing 1\text{-}1/8"$ ($\varnothing 25$ ~ $\varnothing 28$ mm)
- Deck Thickness $1/4"$ ~ $1\text{-}1/8"$ (5 ~ 30 mm)
- For IoT installation, provide clearance space on right side of the controller. Minimum clearance to any surrounding structure is $13/16"$ (20mm). Recommended clearance is $3\text{-}15/16"$ (100mm) or more. Please refer to the diagram below.

TOTO SOAP (Sold Separately)

SKU NO.	QTY	Packaging	Notes
TSFG1	4 gal.	4, 1 gal. ea.	Antibacterial Foam Soap
TSF201	4 gal.	4, 1 gal. ea.	TOTO Foam Hand Soap Green Seal® GS-41
TSF205	5 gal.	1, 5 gal.	TOTO Foam Hand Soap Green Seal® GS-41

DIMENSIONS



* Communication Card